



# DRILLING LOG



FROM : (m) 600 TO : (m) 3617 SCALE : 1/1000

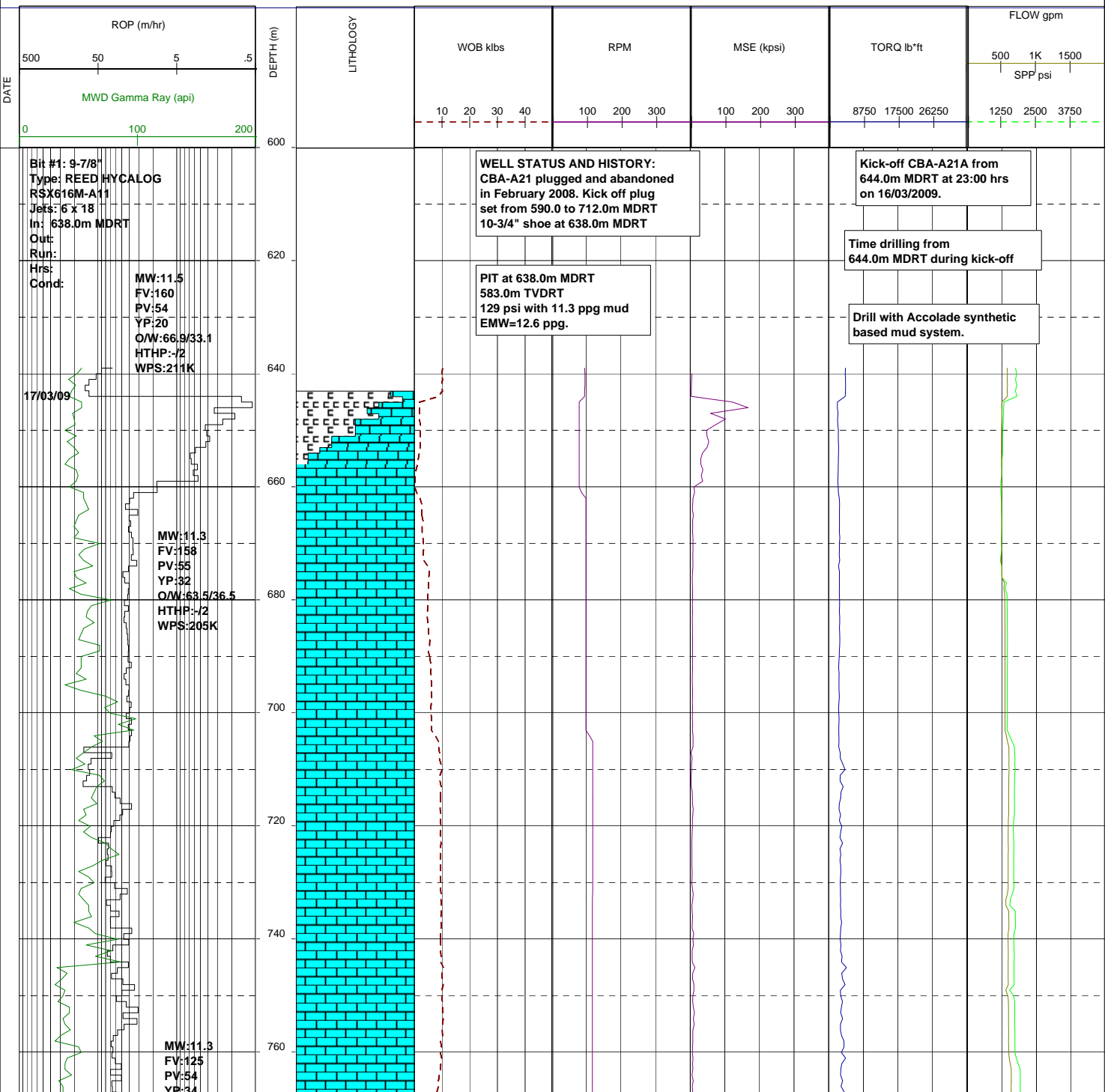
Well Name : Cobia A21A  
Company : ESSO AUSTRALIA LTD

Country : AUSTRALIA

RT-MSL (m) : 41.0  
RT-SEABED (m) : 120.0

Final TD:  
Final TVD:

Generated by geoNEXT Package

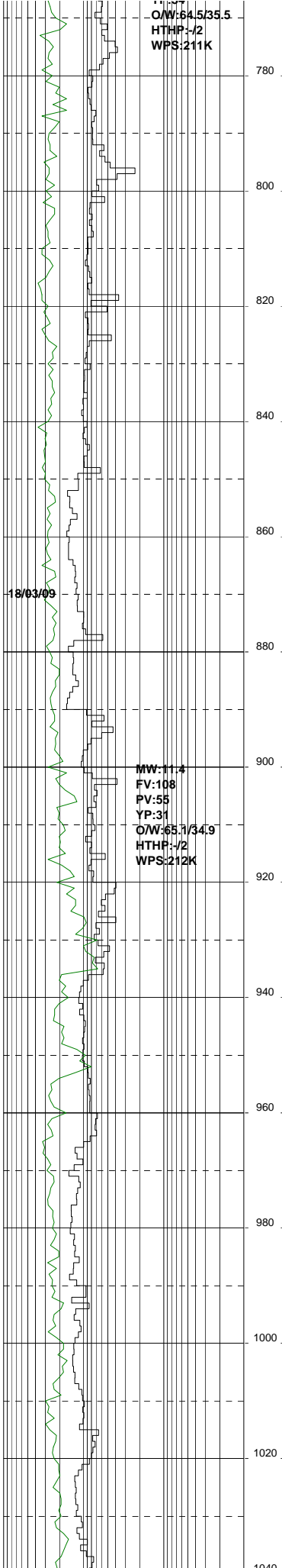
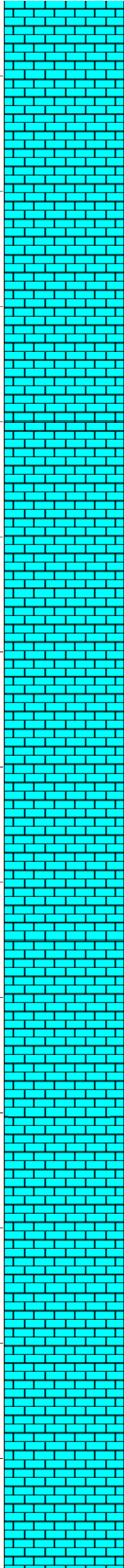


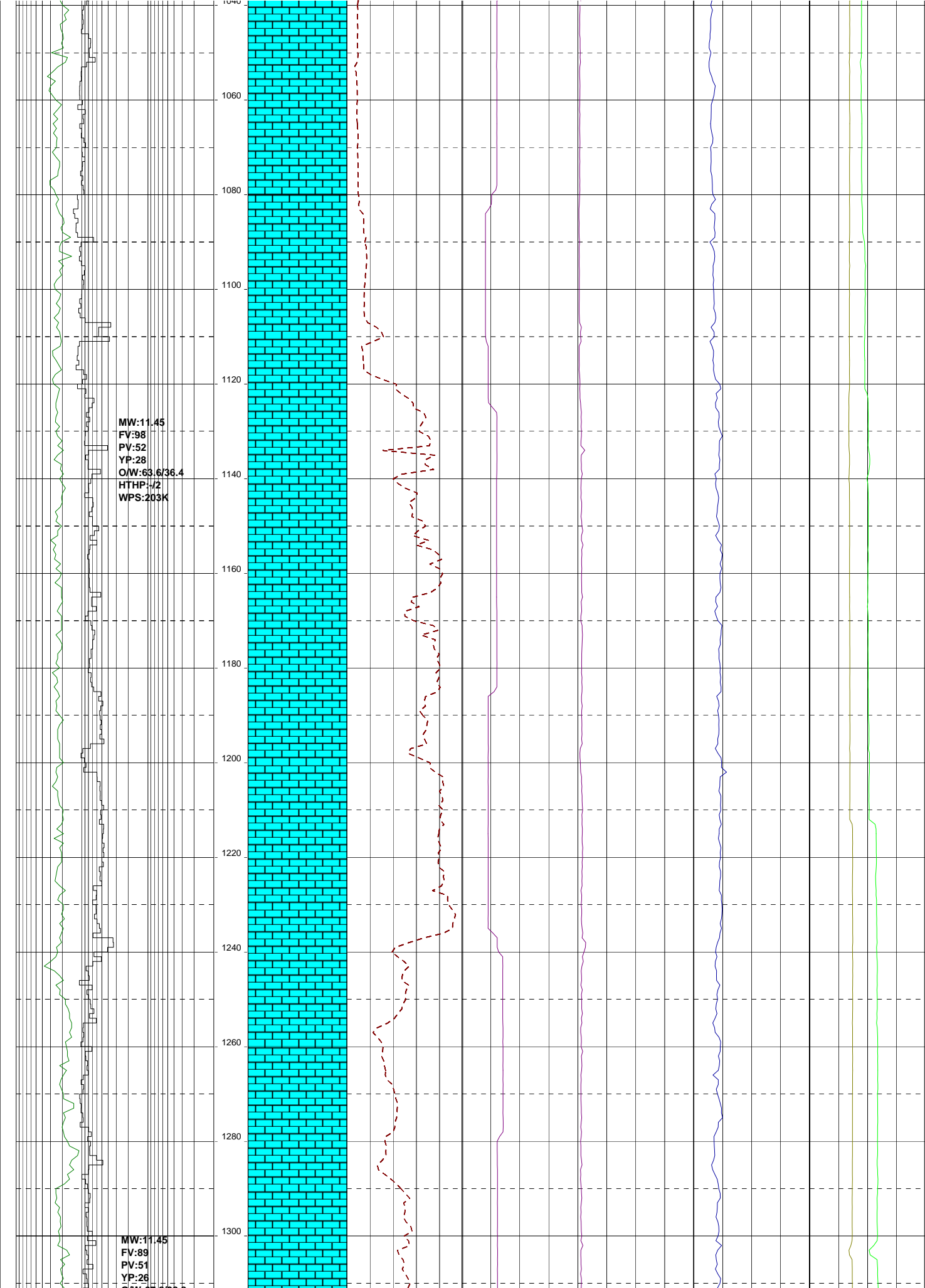
O/W:64.5/35.5  
HTHP:-/2  
WPS:211K

780  
800  
820  
840  
860  
880  
900  
920  
940  
960  
980  
1000  
1020  
1040

18/03/09

MW:11.4  
FV:108  
PV:55  
YP:31  
O/W:65.1/34.9  
HTHP:-/2  
WPS:212K



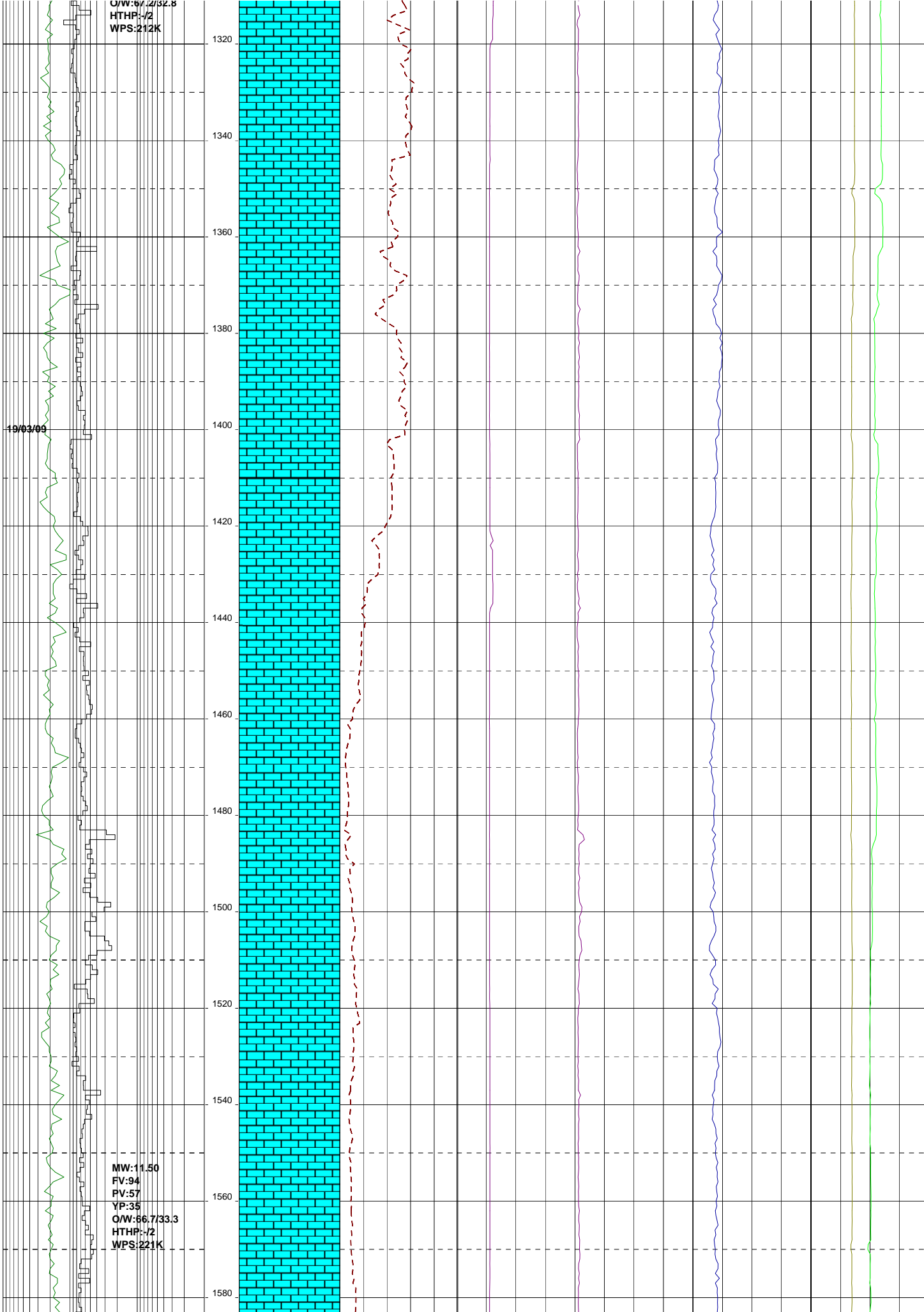


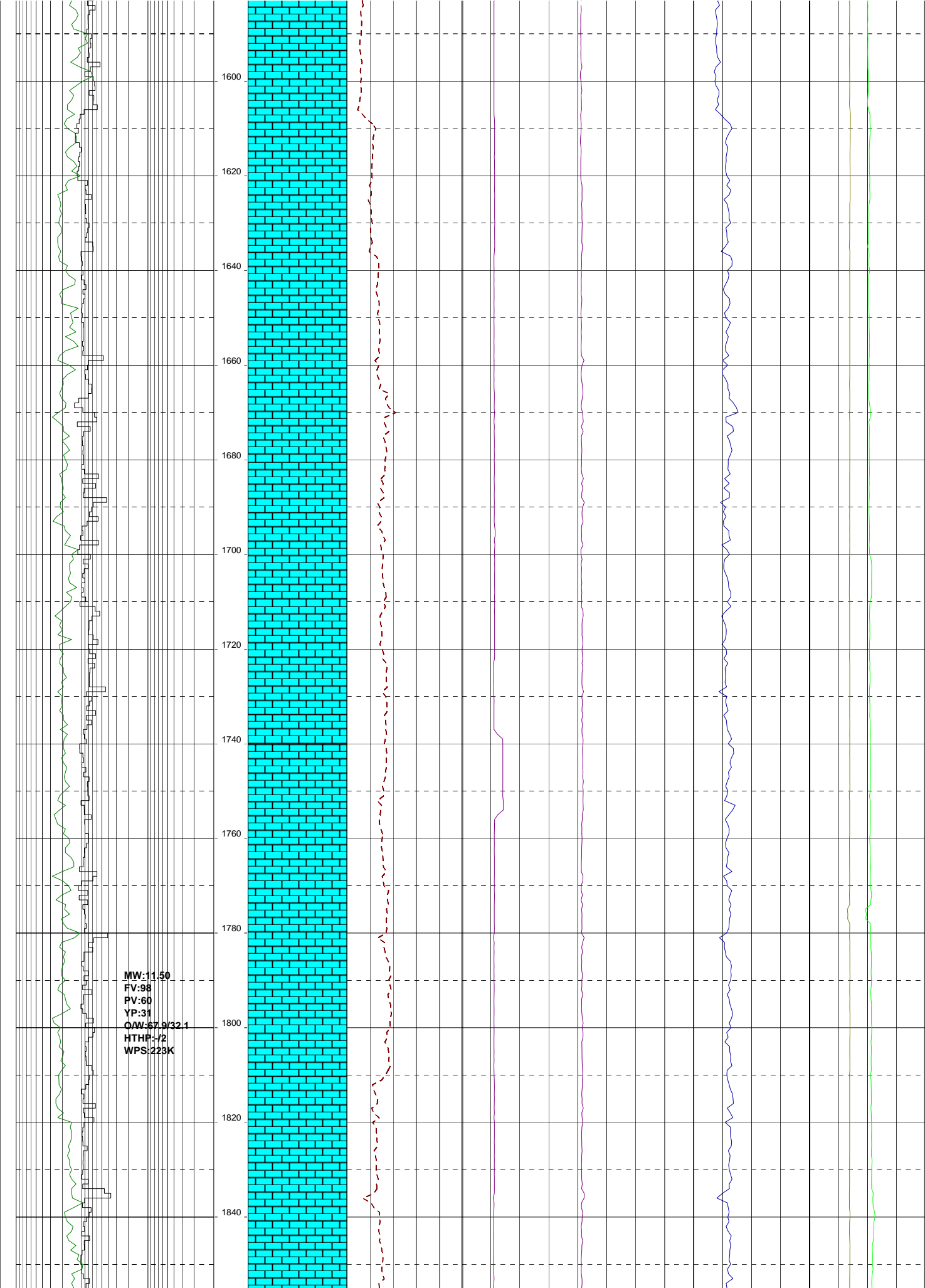
O/W:67.2/32.8  
HTHP:-/2  
WPS:212K

1320  
1340  
1360  
1380  
1400  
1420  
1440  
1460  
1480  
1500  
1520  
1540  
1560  
1580

19/03/09

MW:11.50  
FV:94  
PV:57  
YP:35  
O/W:66.7/33.3  
HTHP:-/2  
WPS:221K





MW:11.45  
FV:105  
PV:62  
YP:32  
O/W:68.1/31.9  
HTHP:-/2  
WPS:224K

20/03/09

